

T
R
A
I
N

O
R
D
E
R

Division One of the
North Central Region of the
National Model Railroad Assoc.

Our mission is to promote education and fellowship through the sharing of information and the promotion of the world's greatest hobby. — **Model Railroading.**



HAPPY HOLIDAYS

Railroad Item of the Month

Your photo can be here if you just send us one.

A long time ago in the snow!



The Mercury

Agenda For
December 19, 2014

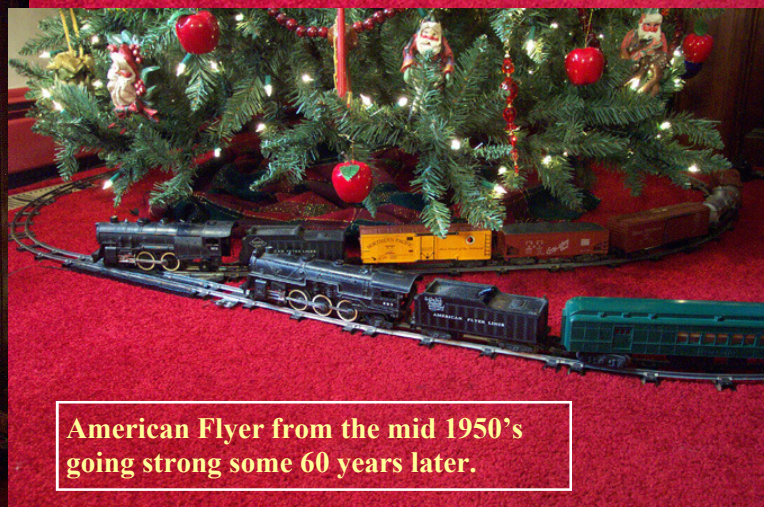
Your attention please!

Due to a scheduling conflict with the Church, our Dec 19th Division One meeting will be held at a different location. **PLEASE NOTE**, we will be meeting at Jerry Sahagian's house (see enclosed map on page 10) on the 19th of December at 7:00pm. Snacks will be provided and a great layout tour offered. However, **no** Chinese Auction! The auction will be held at the Church on January 23rd. There is no formal agenda for this meeting except to come and enjoy an evening of fellowship with your friends and fellow model railroaders.

If any of you have a special Christmas story or pictures of times past, bring them along and share with the group.



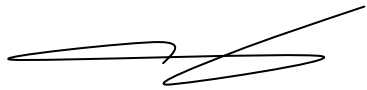
Christmas at the Huber's - 2003



American Flyer from the mid 1950's
going strong some 60 years later.

By: Ray Huber—Dec 2003

VIEW FROM THE CAB



As 2014 draws to a close, I want to thank all the members of Division 1 for your participation and contributions to our activities. I particularly want to commend the membership on all the ideas and discussion you've been contributing at our meetings. As we work to expand formats for sharing model railroading, I think our meeting content is getting better and better. In fact, I've heard a number of comments from members lately reflecting on how much they are learning and enjoying the process. We've had a lot of fun this year and 2015 promises to deliver more. We are going to wrap up the year with our annual Christmas party but we have a couple of changes this year. The date is Friday, December 19, at 7PM, but we will not meet at the church as we usually do. We will gather at the home of Jerry Sahagian for food, fellowship, and running his layout. If you have not been in Jerry's basement, you are in for a treat. We ask everyone to bring something to share in the way of snacks, desserts, or "finger food". Division 1 will provide beverages and service items. You will find a map and directions to Jerry's house elsewhere in this Train Order along with parking instructions. The second change involves our famous Chinese Auction. This year, we will hold the auction at our January 23 meeting instead of the Christmas party. Plan to bring a railroad related gift (modeling or prototype) in the \$20 price range and gift-wrapped. We'll review the rules for the auction in the January Train Order for those of you who are new. Remember that this is not the time to clean out your junk box. Bring something you'd like to receive! The auction is always a lot of fun and laughs, so let's all plan ahead and be there prepared. I'm looking forward to seeing you on December 19. Stay safe, stay warm, and be there!

See ya on down the line,
Dave McMullian, Superintendent

From the Editor's Desk

Ray Huber



Seems like we just said this not to long ago! Not only that, but our third Division One meeting has come and gone. Next thing it will be Christmas.

Won't somebody please slow this train down !

Do I hear an echo here?

About two weeks ago as I was writing the November Train Order, I said to myself, **Yea Gods**, it's winter out there! At that time, there was snow on the ground and the temperature was in the teens. To add insult to injury it wasn't even winter yet. In keeping track of the weather, I noticed on TV that Buffalo, NY had 51 inches of snow on the ground and it was still coming down. Can you imagine what that does to real railroad traffic? As of this writing, they are now worried about flooding due to snow melt.

As I remember, Buffalo in the late 60's was the worst place on the NYC system for snow. Then as is now, switch points are a major concern even in a light snow. In those days we had small pots (smug pots) full of fuel oil and a burning wick that we set under the points to try to keep the steel warm and thus the points free of ice. The wind was so bad that it could move a box car if the brakes were not set—so I was told. As for the snow, it would be loaded into hopper cars and sent south to melt. Management also tried using a jet engine mounted on a flat car to blow snow—that idea did not last long. It disturbed more than snow in the track structure and between the rails. Today they use radiant heat along the points. Same idea, same results!

OK so the weather is bad—it's winter and that's that! However, we both know what this kind of weather should do for model railroad traffic. Can you imagine what we should expect to see next September given a long winter ahead. In other words, no excuses for not working on the Railroad!!!



NOVEMBER MEETING

November has come and gone; but, what a great meeting we had. We had close to 30 people there and once again, there was enough conversation going around that we almost forgot time. The next thing you knew, Dave was calling, snack time and even at that, the talking continued. And it continued and continued. What was all this talking about, weathering rolling stock and motive power. Can you believe there is that much to talk about on this subject? Well, that's what we are hoping for and that's an endless stream of thoughts and conversation to fill an evening at Division One. How educational can you get?

As a person that likes to see fresh out of the shop cars, I was impressed by the depth and breadth of the ideas that came from our membership. As was once again demonstrated, for every one of us, there is a different and interesting idea on how to do the same thing. It even got to the point where I thought I'd better get with it and try some of my own weathering. It hurts me in my heart to take a perfectly gorgeous car and muck it up with all kinds of stuff just to make it look like it's been out side for years, I guess that's what's called weathering and from what I saw and heard, that would make for a great "show & tell" - hint hint!!!



Dave has the floor!



Handwritten signature of Ray Hulse.

Pictures from our
Weathering Clinic and Show & Tell
More on next page

Steve Kellogg - The rust streaks are decals



Randy Bosscher and his weathering style



Jim Treadaway - Difference between in the box and out of the box



John Roth - Old kits nice results



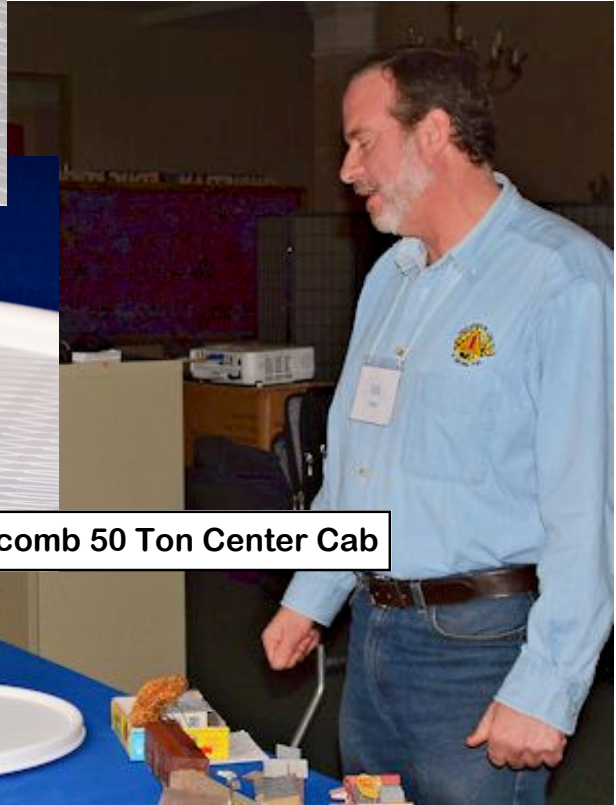
Roger Jensen - Another nice box cab
S gauge



MORE CONTINUED



Bill Vollmar - On30 Whitcomb 50 Ton Center Cab



Jerry Sahagian - What you can do for 1/10
of the cost.



LAYOUT OF THE MONTH

If you attend the Division One Holiday Party at Jerry Sahagian's house on the 19th of Dec., this is some of what you will see.

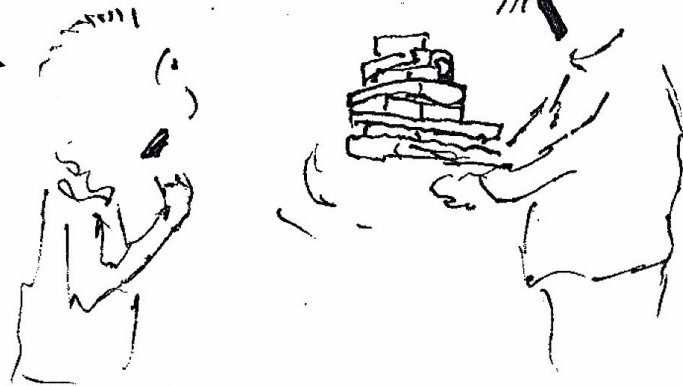


This one is for all of you operations enthusiasts

HAZARDS OF CIVILIZATION
OPERATIONS

OK. YOU'VE GOT THE
RAILROAD'S RULES.
THE LABOR UNIONS
LETTERS OF UNDERSTANDING,
THE PLATTE MAPS OF THE
DISTRICT, SPECIAL
INSTRUCTIONS FOR CUSTOMERS,
D.C.C. INSTRUCTIONS,
COMPUTER INTERFACE AND
SOFTWARE...

BUT IT'S JUST
A 4'x8'
OVAL!



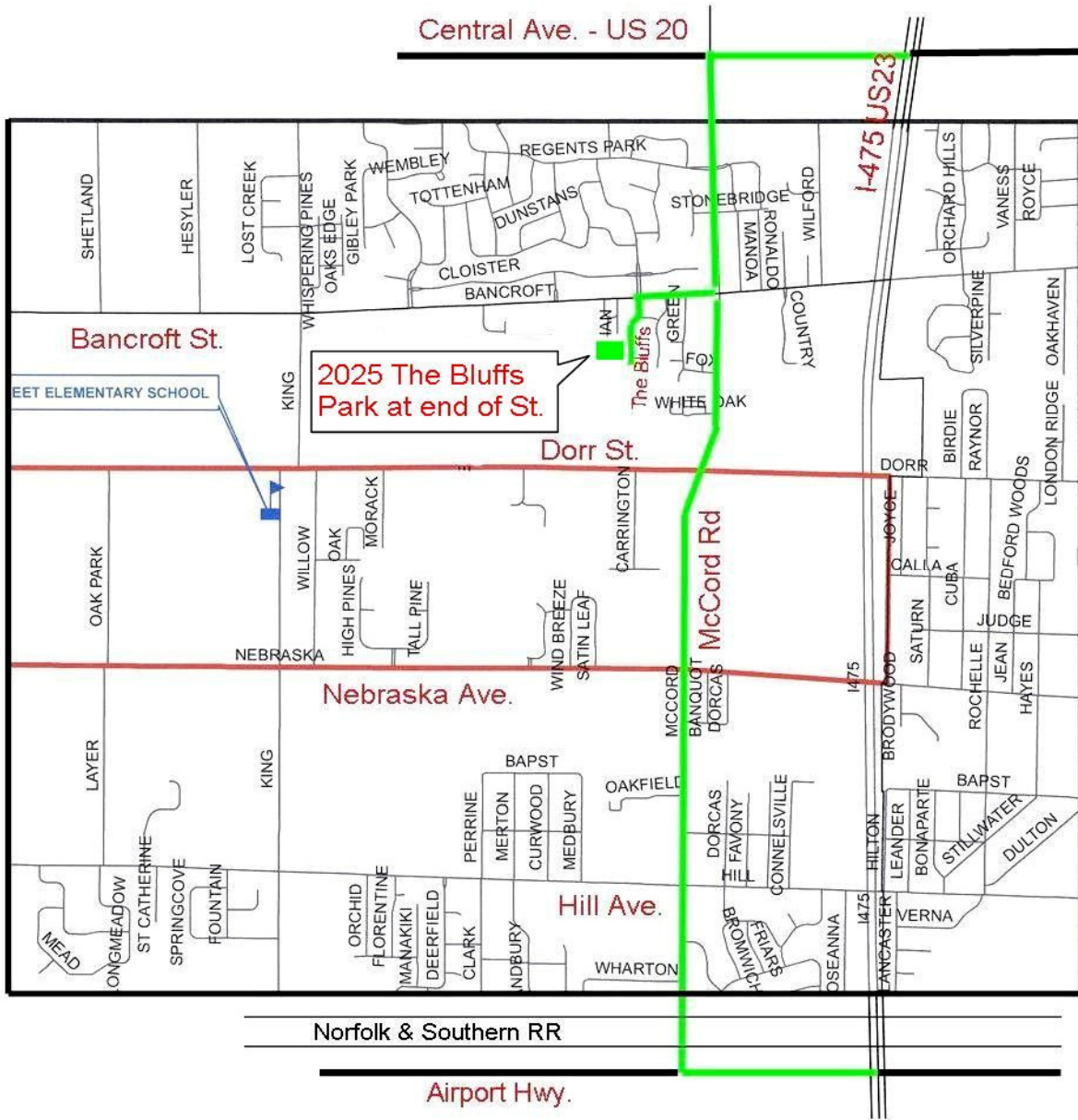
Doug Hickman
Nov 2014

Mystery Solved

Well, I got my answer concerning the cartoon in last months issue of the Train Order. Our Thumbs character was done by Doug Hickman and not only did I get one cartoon for this month, but he gave me two. Therefore, we have another one for the January issue. This is getting to be fun!

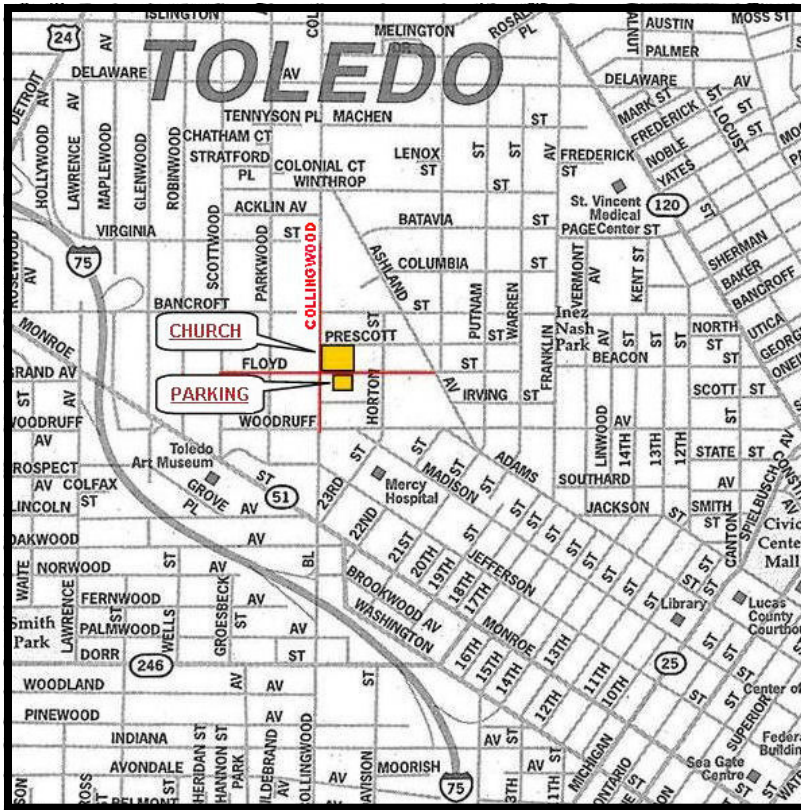
Thanks Doug, this sure helps to make my job easier.
The Editor

DIRECTIONS TO JERRY'S



To get to Jerry's house, follow the green line from the North or South using I-475 as a reference. There is an exit at both Central Ave. & Airport Hwy. About one mile west of I-475, you will find McCord Rd. running North & South. From Airport, it's about 3.5 miles north and from Central it's about 1.5 mile south to Bancroft St. Turn west on Bancroft an go about 1/4 of a mile or less and look for a lighted sign on your left and at ground level that says **The Bluffs**. Just follow the road to the end and park in a parking area at the end of the road. That's about 200 feet from the front door on your right, with a red light, that you just went by.

We meet at the Collingwood Presbyterian Church located at 2108 Collingwood Blvd. at Floyd St. near downtown Toledo, Ohio. See the location map shown below. The doors open at **7:00 PM** and the meeting starts at **7:30 PM**.



Lighting the way!

CURRENT OFFICERS 2014 - 2015

- Superintendent -Dave McMullian.....davemcmullian@earthlink.net
- Assistant Superintendent -Jim Lang.....jiang@buckeye-express.com
- Chief Clerk -John Roth.....jroth@bex.net
- Agent -Phil Kauffmanpennsy6401@bex.net
- Trainmaster for Services -Steve Kelloggatsfmktrock@yahoo.com
- Director at Larger -Scott Davidson.....s.i.davidson@hotmail.com
- Train Order Editor -Ray Huber.....rahuber@bex.net
- Librarian - Vacant

Division One is a 100% NMRA membership organization. For insurance purposes, you are required to be a member of NMRA. Membership in NMRA grants you membership in the North Central Region and Division One.