

T
R
A
I
N
I
N
G
O
R
D
E
R

Division One of the
North Central Region of the
National Model Railroad Assoc.

Our mission is to promote education and fellowship through the sharing of information and the promotion of the world's greatest hobby. — **Model Railroading.**



Railroad Item of the Month

Your photo can be here if you just send us one.



Another in the snow,

From Chicago
Ray Huber

a long time ago!

New York Central
main line between
Chicago and Detroit
Dec 1966



To Detroit
Ray Huber

Vol. #14
JAN 2015

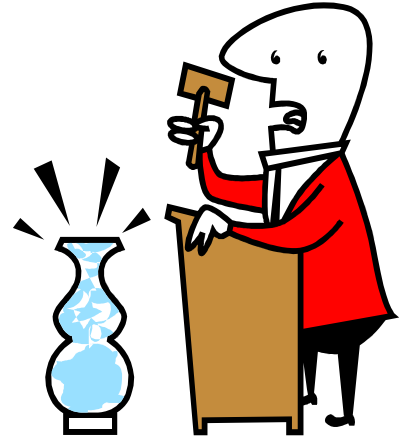


Agenda For
January 23, 2015

Your attention please!

Just a reminded, the annual Chinese Auction will be held during our January 23rd meeting. If you wish to participate, bring a gift (wrapped in Christmas wrappings) worth \$15 to \$20 dollars. Keep in mind, this is not the place to dump junk. Anything **new or unopened** is welcome!

It can be of any scale and does not need to be a train item. For example, gift Certificates are popular, books & tools are good ideas and of course scenery material is always welcomed.



The rules of the game will be announced Friday evening at Division.

AN INTERESTING PLACE TO
GO IF YOU LIKE SHAY'S!



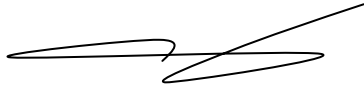
Cass Scenic Railway West Virginia
Summer 1969

www.cassrailroad.com

Sure has changed since "69"!

A handwritten signature in black ink, appearing to read "Ray Hilder".

VIEW FROM THE CAB



View from the Cab

The year is new, the air is cold, and Division 1 is having fun! What a great time we had as we celebrated our Christmas party at Jerry Sahagian's house. We had an excellent turnout including some new faces and I particularly enjoyed having this special occasion at a home for a change. Big thanks to Jerry for the hospitality and good times on the layout. We are kicking off the new year back at the church with our January 23rd meeting. To start things off, Chuck White, Superintendent of Division 3 in Ft. Wayne, will make a presentation about this year's NCR convention they are hosting Halloween weekend (Oct. 29-Nov. 1). They've got some big things planned and some new twists as well, so here's our chance to hear it all and ask questions. Then we will move into a special Show-n-Tell time with the theme Christmas Memories. Bring something railroad related from this Christmas or one in the past. Maybe it's a gift you received, or perhaps you have pictures or videos from holidays gone by. This will be a fun time to share treasures and stories, so please bring something and let's have lots of variety. Our final activity for the evening will be the annual Chinese Auction. This is always full of laughs and surprises, so let's keep up the tradition! Remember the simple rules: bring a wrapped gift in the \$20 range that is railroad or modeling related. For those of you who are new, we'll explain how the gift "exchange" works when we start, but just let me say it's got elements of chance, surprise, and strategy. Everyone is a winner and the more the merrier, so I encourage all of you to make a special effort to be there and be part of it.

Obviously, we've got a lot on our plate for this gathering, so rather than have a business meeting, I will have a couple of announcements and quick things for your attention, then we will move on to the program pronto. Next month we will resume our usual member activities including Show-n-Tell, Pics-n-Flics, Tools-n-Techniques and a forum/discussion topic. We've also got a couple of great clinics lined up for February and March, but I'm not going to tell you until the January meeting, so be there on the 23rd, bring your gift, and let's start the year off right!

See ya on down the line,

Dave McMullian, Superintendent



From the Editor's Desk

Ray Huber



Well, here we go again with another year. Why does it seem that they come around so often. Maybe it's just my imagination running wild again, but it sure seems that way.

I recently read a comment from a friend of mine that said;

It's much easier to grow older than to grow wiser!



Right about now, I'm thinking we should give Jerry Sahagian a big **THANK YOU** for hosting the Holiday Party at his home.

THANKS Jerry



On that note, I hope you all had a great Holiday with family and friends.

Now that the Holiday season is behind us and there is still a lot of Winter to go, we should all start thinking about getting those model projects done that we've been putting off! Next thing it will be Spring and more excuses!

Just a thought, but if Santa was good to you, maybe you would like to Show & Tell us about your new treasure? If nothing else, bring it along for Show & Tell. Here's an idea, if you had a train around the tree, show it (video or slides) and tell us the history. Was it yours? Was it your kids - and more importantly, who's still playing with it?

Enough for now, let's get on with our Hobby and at the same time, share it with others. You will find it rewarding!

A handwritten signature in black ink that reads "Ray Huber".

DECEMBER'S MEETING PARTY & SHARING

Sorry we missed you at our Holiday party at Jerry's house. We had approximately 20 in attendance and lot's of good food to go around. The major theme for this months gathering was, just to share a moment with friends and have a good time.

With so much going on in the World today, we all tend to forget just what the meaning of friends and shared times really mean. In that same spirit, we hope to see you at Division One in 2015.



Pictures from our Holiday Party



If you went home hungry, it was your fault!

LAYOUT OF THE MONTH

Jerry Sahagian

OK - now what do I do?



What's wrong now!



On the High Bridge



Simple, but Clean & Neat



Ladies in Waiting



Here's one for the books McMullian wearing a tie!

Ray Huber—Dec 19, 2014



Heavy Metal

LAYOUT CONTINUED



Jim Lang with the Empire Builder

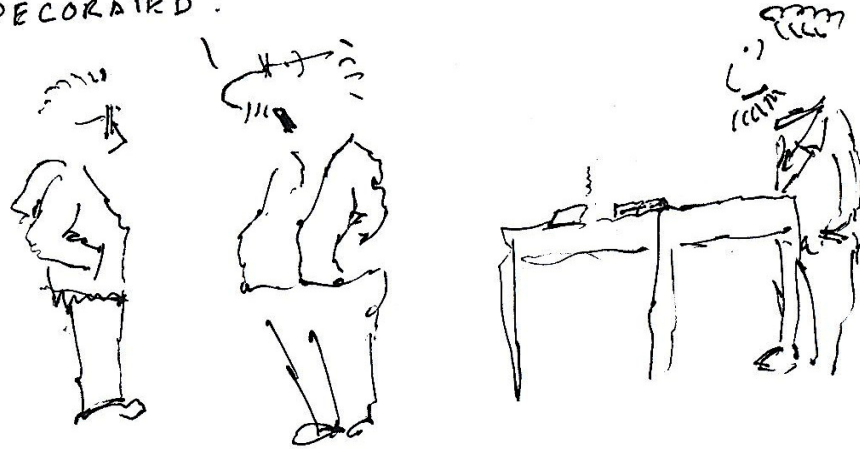
Coming into town.



Best seat in the house or should I say train!

HAZARDS OF CIVILIZATION

DETAIL? ARE YOU KIDDING? HE HAD THE
NAME OF HIS RAILROAD TATOOED ON HIS HAND-
SO HIS "0-5-0" SWITCHERS WOULDN'T BE
UNDECORATED!



Doug Hickman
Nov 2014

OK let's be honest, how many of you are guilty of this picture? I know that I have had a few occasions when my 0-5-0 came in handy!

At the Holiday Party, I approached Doug and asked him if he had any more "Thumbs" cartoons.

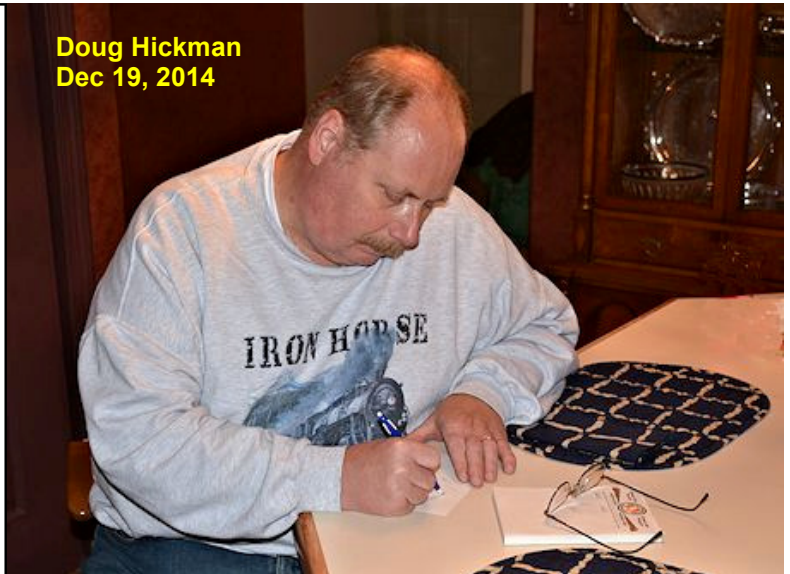
I explained that his last one would be in the January issue of the Train Order and that's the one you see on this page.

He said OK and disappeared. I went out to the kitchen to get a bit to eat and there at the kitchen table was Doug.

In less than 10 minutes, the Master at Work, had a new cartoon ready for me which you will see in the February Train Order.

What else is there to say!

Doug Hickman
Dec 19, 2014



Caught in the Act!

SNEEK PREVIEW OF A SPECIAL “SHOW & TELL”

Here’s an example of what I was talking about in my column, From the Editor’s Desk. Not much to it, but it sure can muster a lot of good conversation as well as a tear of good days gone by. Dig out your photos or slides of those days and send them to me scanned (JPF format please) or just the picture or slide (you will get it back) and I will try to get them into the Train Order.



From Dave McMullian’s collection — Thanks Dad for the memories.

Dave told me he got these Marklin sets as a teenager while he lived in Germany with his Dad, an US Air Force Officer, and Family. That was 1958 to 1961.

How many of you have heard the phrase — “what a small world it is!” Well, one day Dave and I were talking about our hobby and how it all got started. One thing lead to another and I mentioned that I had spent 2 years in Germany with the US Air Force back in 1957 to 1959 and really liked the Marklin train sets that were dirt cheap back then, even for an Airman 1st class like myself. Dave told me that his Dad got him a couple of sets (see above) and “I still have them.”

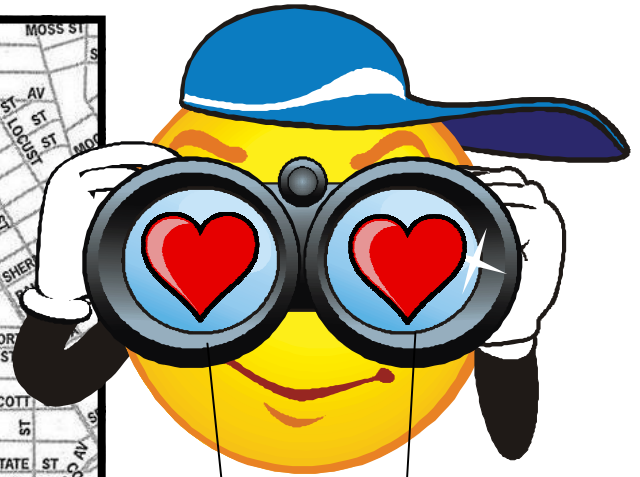
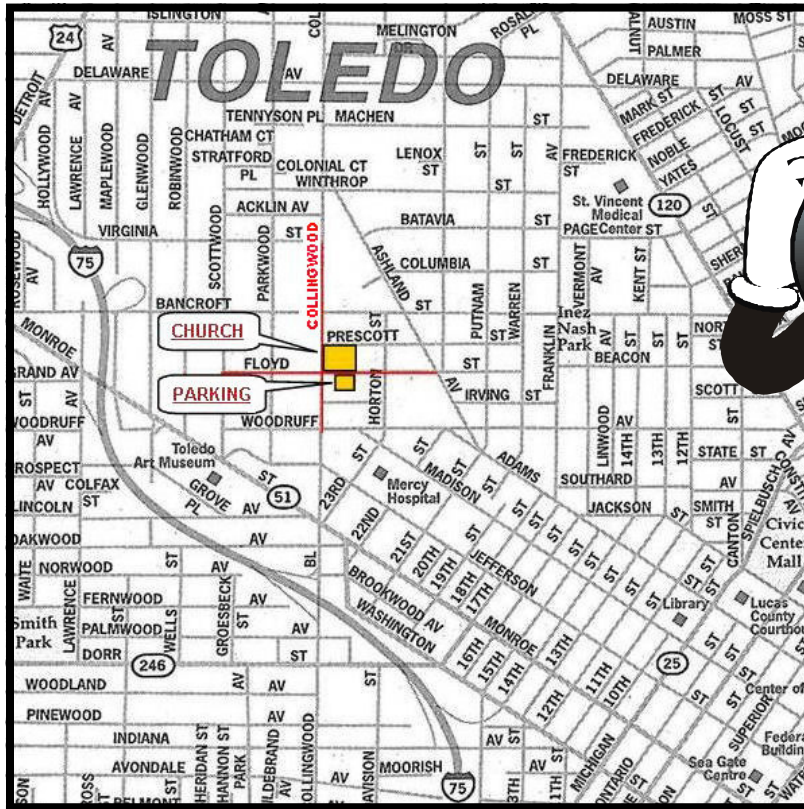
Oh by the way Dave said, where were you stationed in Germany. I told him Sembach Air Force Base and Dave just about fell off his chair. You’ve got to be kidding me he said because that’s where my Dad was stationed and that’s where I started High School. Given the 10 years in age that separated us as well as civilian vs. military, we would have never meet. Dave got there in 1958 and I left in the fall 1959—it truly is a small world. We still chuckle at the coincidence.

No, I never did bring any Marklin equipment home, but by the time I did get back to the States and back into civilian life, the “Blue Box” was on the market and I was hooked. The rubber bands are gone, but a few cars still ride the rails.



Ray Hill

We meet at the Collingwood Presbyterian Church located at 2108 Collingwood Blvd. at Floyd St. near downtown Toledo, Ohio. See the location map shown below. The doors open at **7:00 PM** and the meeting starts at **7:30 PM**.



CURRENT OFFICERS 2014 - 2015

- Superintendent -Dave McMullian.....davemcmullian@earthlink.net
- Assistant Superintendent -Jim Lang.....jiang@buckeye-express.com
- Chief Clerk -John Roth.....jroth@bex.net
- Agent -Phil Kauffmanpennsy6401@bex.net
- Trainmaster for Services -Steve Kelloggatsfmktrock@yahoo.com
- Director at Larger -Scott Davidson.....s.i.davidson@hotmail.com
- Train Order Editor -Ray Huber.....rahuber@bex.net
- Librarian - Vacant

Gentlemen: February 14th is coming and that means **Valentines Day**. So, don't forget the one that lets you get away with all the crazy things we do as Model Railroaders!

Division One is a 100% NMRA membership organization. For insurance purposes, you are required to be a member of NMRA. Membership in NMRA grants you membership in the North Central Region and Division One.