

Division One of the  
North Central Region of the  
National Model Railroad Assoc.



Our mission is to promote education and fellowship through the sharing of information and the promotion of the world's greatest hobby. — **Model Railroading.**

**Railroad Item of the Month**

**Your photo can be here if you just send us one.**



Ray Huber  
Circa - Early 1970's

From what I can find, the old depot at Waterville, Ohio started life as the Toledo, St. Louis and Western RR or as they used to call it, The Clover Leaf Route. The Nickel Plate RR took over in the 1920's and then the Norfolk and Western in 1964 due to the merger of the two railroads. In 1982, the N&W became the Norfolk Southern due to another merger. Today it belongs to the Toledo, Lake Erie and Western RR, or the Blue Bird for many of us that live in the area.

# View from the Cab

April 2016

Well, it's official. Division One, North Central Region, National Model Railroad Association is now known as the Black Swamp Division. Other Divisions in the NCR are deciding on names as well, so it will be fun to see what develops. We all need to be thinking about ideas to update our logo to fit our new name. You don't have to be a graphic artist, just sketch an idea or suggest icons we can incorporate into a new design. Hopefully by this Fall we can put something together that we all like.

I don't know about you, but I am really enjoying our ongoing efforts to learn more about railroad operations. Since we kicked off this effort a few months ago, I find myself in more conversations with other modelers discussing prototype practices, layout design, and different ways of approaching things. As a result, I've radically changed my plans regarding 1/3 of my layout and significantly altered three other sections. And I suspect the process will go on, as I'm getting fresh input from lots of folks. Last week we held our latest OPS group meeting at Dex Decker's house. Even though Dex and I model completely different regions, eras, and equipment, I came away with several fresh concepts I can apply to my pike. Once again, I'm reminded of how much I gain from our fellowship at Division One. I understand there are guys out there who just want to build and run trains on their own, but I would never give up all I've gained from my fellow members in terms of ideas, support, and just plain good times. If you have not attended one of our OPS group meetings, I hope you will.

Don't forget that our annual outing is coming up. This year we are going to visit a couple of layouts at Division Five in Lansing and then have an ops session on Andy Keeney's Nashville Road. Andy's layout is large, long, and a blast to run. Whether you are a seasoned operator or total newbie, Andy will plug you in and make sure you have a great time. I've operated this layout several times and always enjoy going back. Besides having fun, I inevitably learn new things that will help me with my own modeling and practices. Mark your calendars for Saturday, May 21. We will rendezvous at 8 AM next to Rally's in front of the Walmart at Central and Holland-Sylvania. We'll organize rides and then hit the road at 8:30. Watch the Train Order for more info prior to the event.

Last week I visited Norm Cattell's new layout and really appreciated how it's shaping up. Norm is doing some innovative things and applying lessons he's learned from prior layouts. He will make a presentation at this coming Division One meeting at 7 PM, Friday, April 22. And as always, we are counting on YOU to bring your projects for Show'n'Tell, Pics'n'Flics, and Tools'n'Techniques. It's our last regular meeting before the Summer break, so please, please, dust off those old ideas and bring along some new ones as well. Let's keep helping one another learn new things, become better modelers, and have fun together!

See ya on down the line...

Dave McMullian  
Superintendent

## **Division One March 2016 meeting minutes**

The meeting was called to order at 7:05 pm by Supt. McMullian. 25 members and guests were in attendance.

### Old Business:

Ops project: the next meeting of the operations group will be on Sunday, April 10 at Dex Dexter's house. Look for Dex's address and directions to his house in the upcoming e-mail from the ops group.

2. The April layout of the month will be at Roger Jensen's home on Sunday, April 24 from 1-5. Directions will be in the next Train Order.

After much discussion on the 'Name the Division' contest a motion was put forward by Norm Cattell to have the Black Swamp Division name as our new name. Motion was seconded by Jim Treadaway. The motion was carried by voice vote, with one negative vote. Supt. McMullian brought in a computer image of an idea for the new division logo, and suggested the division could have decal sets made for an undecorated boxcar. The Supt. Also asked members to contribute ideas and drawings for a new division logo. Please submit them to Ray Huber via e-mail. We will continue the discussion for a new logo in September after our summer meeting break.

The spring outing this year will be on May 21. We will go to Lansing for layout tours in the morning. After lunch, we will go to Andy Keene's house for an operating session on his Nashville Road layout.

### New Business:

There was no new business brought to the floor. The business meeting was adjourned at 7:35 pm.

### Activity Session:

Ray Huber distributed handouts and did a video presentation of a simple end of track/track occupancy detector circuit he had built. This circuit can be used to detect the occupancy of hidden track in a building or at the end of a siding. Ray also explained how the circuit could be used to track the progress of a train in a hidden helix.

Norm Cattell gave the members a talk on how prototype railroads switch industries and yard tracks. He gave several suggestion on how these practices could be incorporated into model railroad operations.

### Show-N-Tell:

Steve Kellogg brought in a metal printer's plate for an advertisement for covered hopper service on the Santa Fe Railroad. Steve found the plate at a flea market.

Bob Alexander gave a brief talk on 3-D printing and brought in several items that had been built with a home made 3-D printer.

Randy Bosscher brought in a drilling tool he had made from commercially available parts to use on drilling with extremely small hobby sized drill bits.

### Tools-N-Techniques:

1. Dave McMullian brought in a Euroboard, a new type of printed circuit board with predrilled holes that makes the construction of circuits much more simple. These boards can be cut into very thin strips and can also be used to make lighting strips for passenger cars using surface mount led's. Dave also brought in a 4 tier paint carousel available from Micro-Mark.

Jim White brought in a miniature rope light.

### Pics-N-Flics:

There were no pics-n-flics this month.

Next month we will have a new feature to the activity session. We will close the meeting with a question and answer session. Please feel free to ask questions on any topic related to model railroading. The idea is to have our members share their knowledge with one another in an effort to improve our modeling knowledge and skills.

# From the Editor's Desk

Ray Huber

Well, here we are at the end of another season. As they say,

## my how time flies when your having fun!

As I sit back and look over the last three years that the Train Order has been published in the same format you are looking at, I wonder if there might be some better format? More importantly, is there someone out there who has an idea to help make it better and more importantly than that, is there someone out there who would like to take over the job? Applications are being accepted!

Change is a bad word for many people! It is resisted, fought over, and friendships lost over it. Yet, and again as they say, **change is inevitable!** We all get set in our ways and with time get the “old pair of slippers” attitude. At the same time I keep hearing, where are the young people? In my mind, young people equate to CHANGE! Is that bad? Of course not! I see it every day in my business and I’m sure you do as well. New technology and young minds equate to great things to come. Are you ready?

Just look at our hobby; ten years ago operating a model train via DCC was nothing but a dream. For many of us it wasn’t even a dream because not may of us gave it a thought due to the cost or knew nothing about it. In other words, we were comfortable with the way it was.

Then one day, someone with a vision came up with this grand idea that you could run two trains on the same track at the same time - preposterous I said! And then to add insult to injury, now they are doing it without wires—what this world coming to?



Look around you! Change is everywhere. Where did film go? Where did carbon paper go? What happened to VCR tapes? Can you work without a computer or your cell phone? And on and on it goes! Good heavens, we even have a new name/logo for Division One.

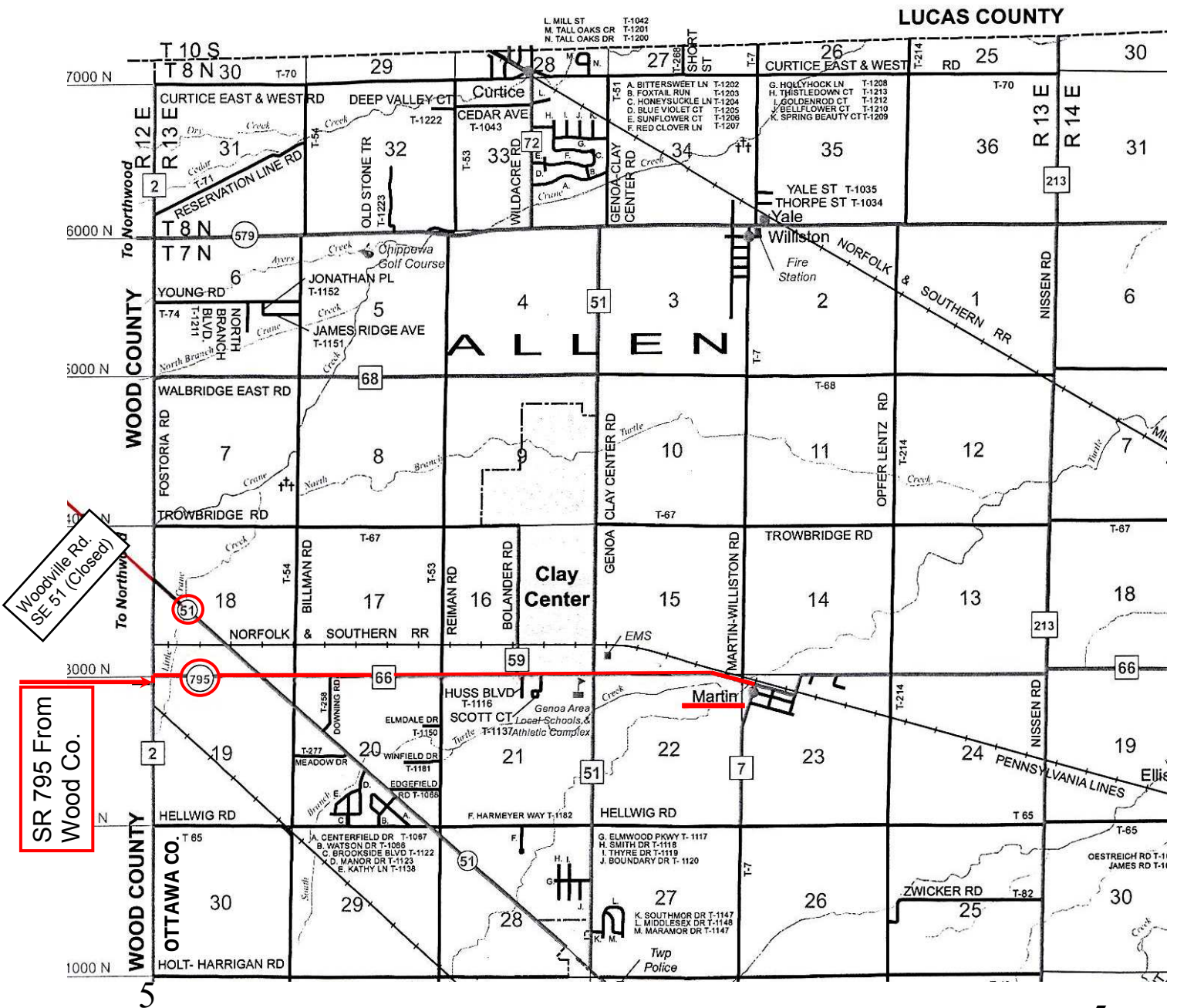
As for me, I’m getting off (retiring from my day job) at the next station stop. It’s been one heck of a ride, but it’s time to move over for the next generation and let them soar!

A handwritten signature in black ink that reads "Ray Huber".

# DIRECTIONS TO ROGER JENSEN'S OPEN HOUSE

## SPECIAL NOTICE

The ORANGE barrels are at it again! I've just learned that SR51 will be closed to all traffic from Northwood south to SR795 in Ottawa County some time before Apr. 24th. Therefore, you need to take SR795 east from Perrysburg. SR795 will turn into Co. Rd. 66 when you enter Ottawa Co. Follow CR66 4 miles until you get to Martin, Ohio. See map on next page.



Woodville Rd.  
SE 51 (Closed)

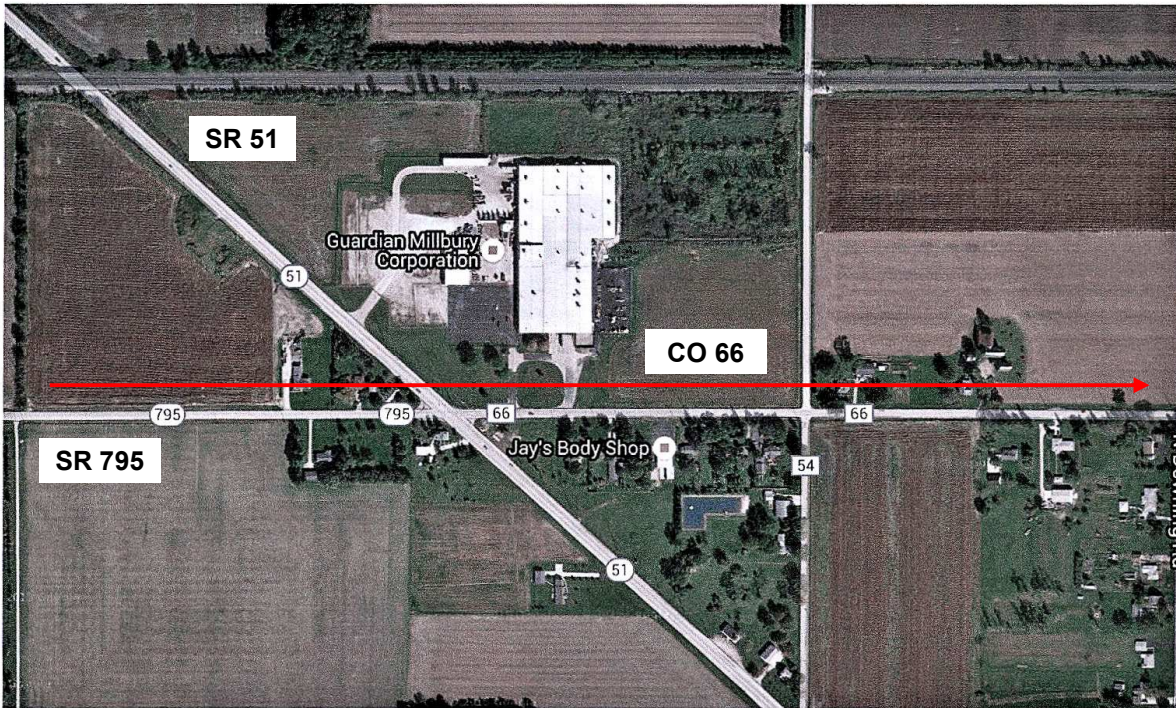
SR 795 From  
Wood Co.

DATE: April 24th, TIME 1:00 to 5:00 PM.

## Directions to Roger Jensen's open house.

Here's a close up of Roger's house. Remember, SR795 turns into Co. Rd 66 in Ottawa County. Travel east on SR 795 in Wood Co. until you get to the Ottawa County line. Follow Co Rd 66 until you run into the old NYC main line. You will be in sight of Martin, Ohio. Follow the red line to Roger's house, 2766 3rd Street.

**DATE: April 24th, TIME 1:00 to 5:00 PM.**



Once again, Steve Kellogg comes through with some oldie's but goodies. Anybody know where you are? Hint, there used to be a station with a Keystone on it at this location. As a matter of fact, there was a BIG bridge there also.

Thanks Steve.



If your still guessing, it's the site of the former Pennsylvania Station on North Summit St., Toledo, Ohio


Visit the  
*“Toad Mountain Railroad”*  
The second year of operation  
for this garden railroad  
July 17<sup>th</sup>, 2016  
10:00 A.M. – 4:00 P.M.  
4205 Mitchaw Road  
Sylvania, OH 43560

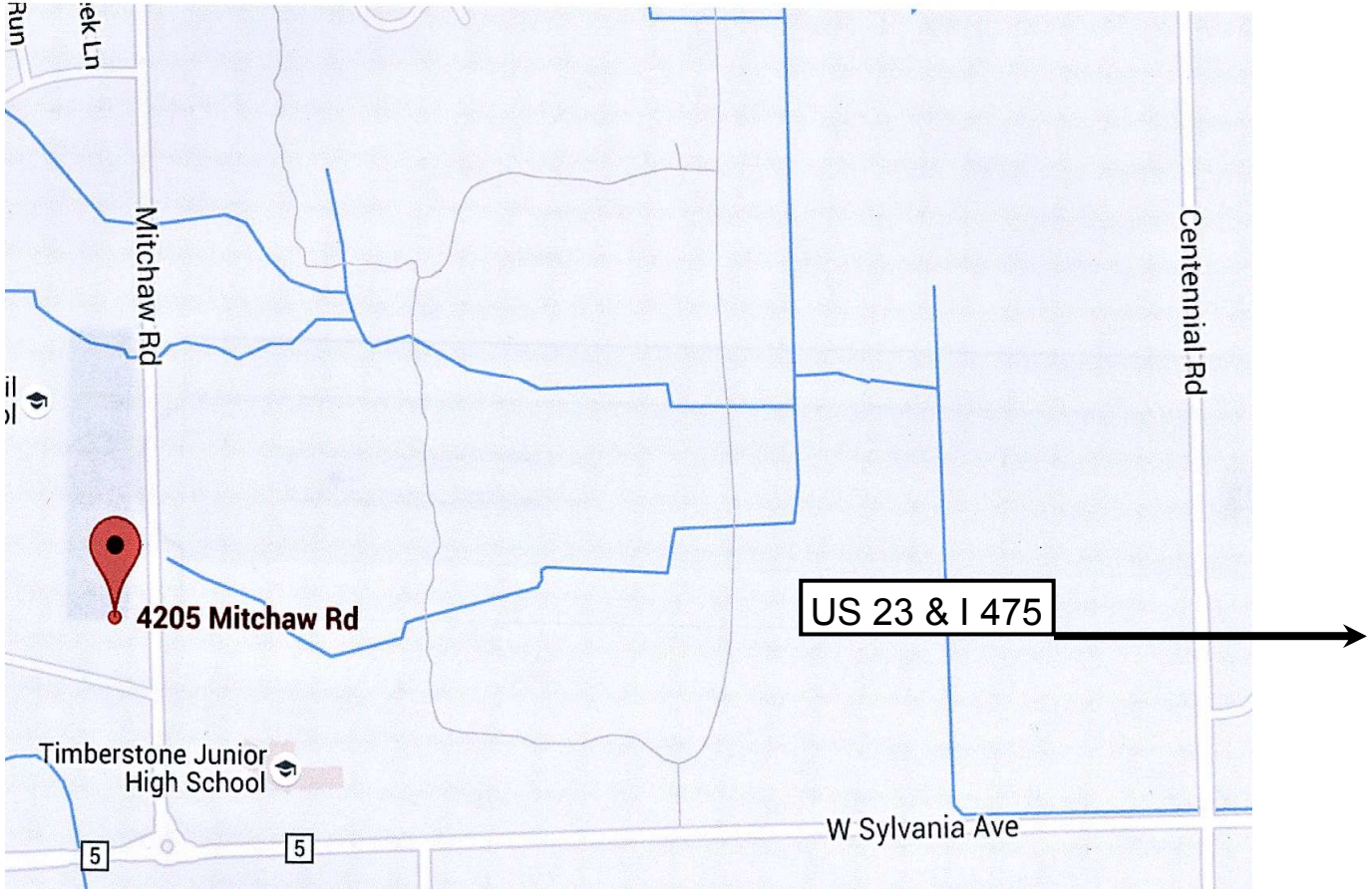


OK everyone, here's a chance to see a good size GARDEN RAILROAD in action. Rick Breitzman has had his layout open once before. See the next page for a map to his home in Sylvania, Ohio.



**Directions to Rick Breitzman's home.**

 **4205 Mitchaw Rd**  
4205 Mitchaw Rd, Sylvania, OH 43560



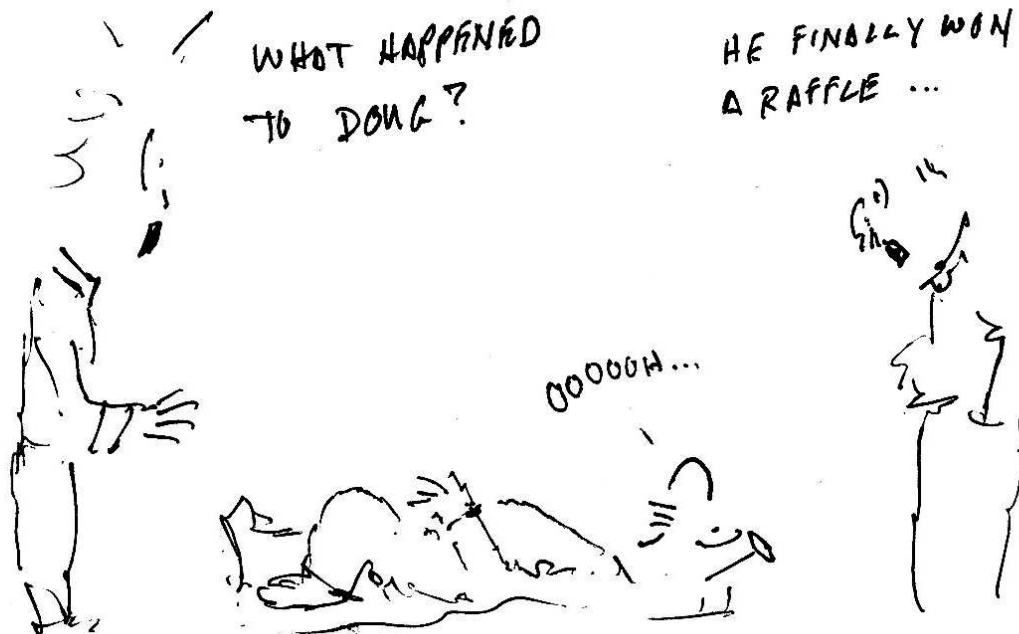
Check out the latest issue of the Hot Box. They have a rather large listing of Train Shows coming up. Some are fairly close by—ENJOY!

Following this link and you will be able to read and print the latest NMRA North Central Region HotBox.

<http://ncr-nmra.org/sites/ncr-nmra.org/files/hotbox/hotbox-vol57no1.pdf>

---

### HAZARDS OF CIVILIZATION



By: Doug Hickman  
Feb 2016

Hey Doug:  
Sure hope your feeling better after your episode!



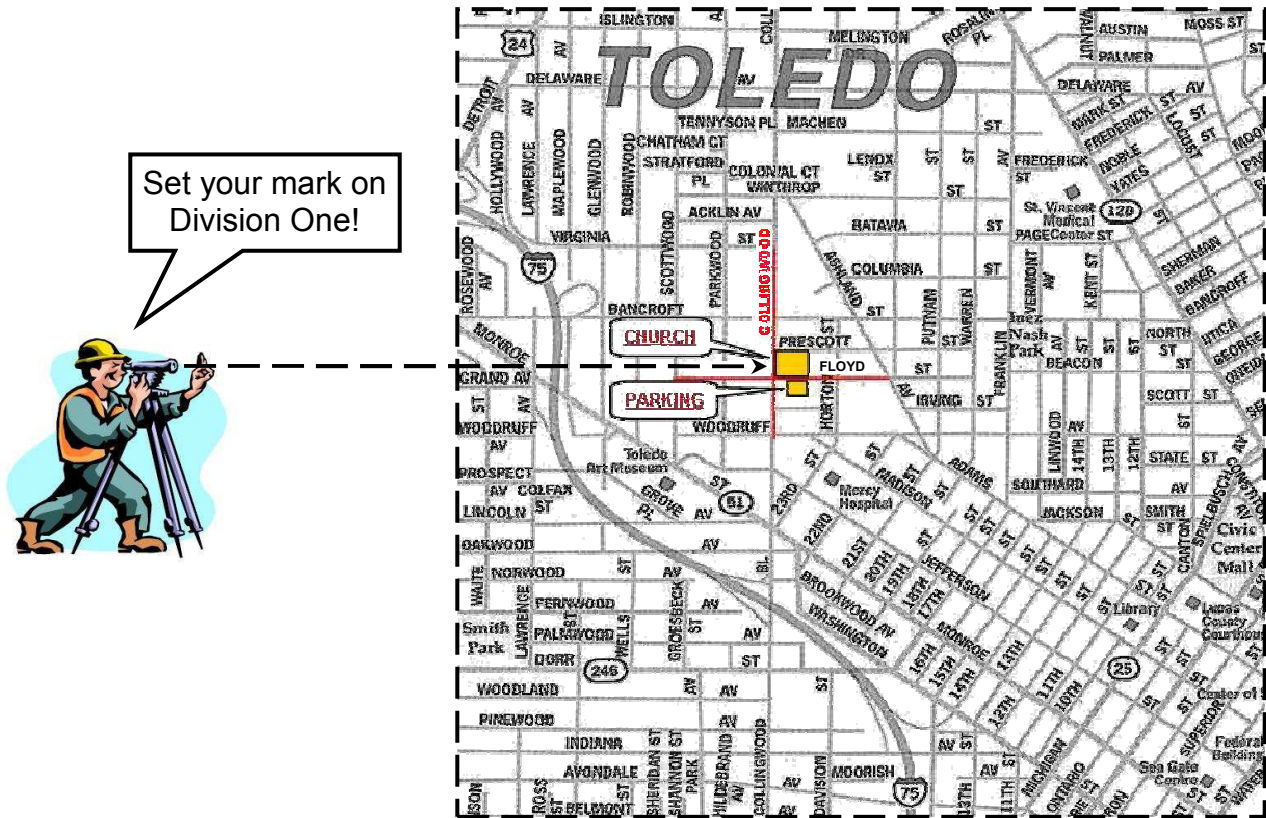
**TOLEDO  
&  
MAUMEE VALLEY**

**Pics & Flics**

*Ray Hulse*



We meet at the Collingwood Presbyterian Church located at 2108 Collingwood Blvd. at Floyd St. near downtown Toledo, Ohio. See the location map shown below. The doors open at **6:30 PM** and the meeting starts at **7:00 PM**.



**CURRENT OFFICERS 2014 - 2015**

- Superintendent - .....Dave McMullian.....[davemcmullian@earthlink.net](mailto:davemcmullian@earthlink.net)
- Assistant Superintendent - .....Jim Lang.....[jlang@buckeye-express.com](mailto:jlang@buckeye-express.com)
- Chief Clerk - .....John Roth.....[jroth@bex.net](mailto:jroth@bex.net)
- Agent - .....Phil Kauffman .....[pennsy6401@bex.net](mailto:pennsy6401@bex.net)
- Trainmaster for Services - .....Steve Kellogg .....[atsfmktrock@yahoo.com](mailto:atsfmktrock@yahoo.com)
- Director at Larger - .....Ray Huber.....[rahuber@bex.net](mailto:rahuber@bex.net)
- Train Order Editor - .....Ray Huber.....[rahuber@bex.net](mailto:rahuber@bex.net)
- Librarian - .....Dex Decker.....[dexdecker@gmail.com](mailto:dexdecker@gmail.com)

Division One is a 100% NMRA membership organization. For insurance purposes, you are required to be a member of NMRA. Membership in NMRA grants you membership in both the North Central Region and Division One.