

Division One of the
North Central Region of the
National Model Railroad Assoc.



Our mission is to promote education and fellowship through the sharing of information and the promotion of the world's greatest hobby. — **Model Railroading.**



Railroad Item of the Month

Your photo can be here if you just send us one.

No real history about this trestle except it was on the old Wabash Railroad line that ran between Toledo and Fort Wayne. This photo was taken near the Ohio/Indiana line and can be seen from the new US 24. I've never seen this trestle, but the Old Line does bring back memories. As a kid we lived right next the Wabash/Nickel Plate tracks in south Toledo. During the summer my mother would say to me, Raymond, when The Flyer goes by (about 9:00 pm), you come in the house and that was that! Can you picture that High Wheeler? I can!



Photo By: Jim Lang – 2013

**Division 1, NCR, NMRA
MEMBERSHIP MEETING
Friday, March 28, 2014**

- 1) Call to Order, welcome and introduction of guests and visitors

- 2) OLD BUSINESS
 - a) 2014 convention update
 - b) Update on Division 1 website
 - c) Train Order updates
 - d) Layout Open House

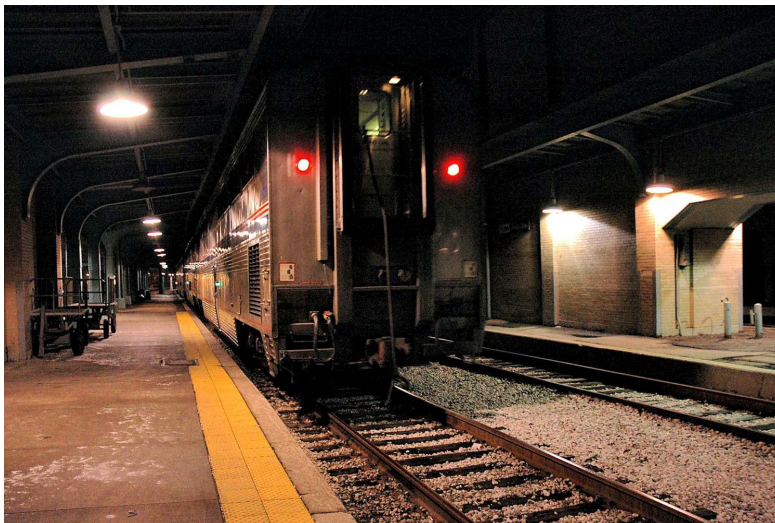
- 3) NEW BUSINESS
 - a) Spring outing - Crossroads Village/Huckleberry Railroad
 - b) Business from the floor

RIP Track
Door Prizes
(Refreshment Break)

FEATURE PROGRAM: Life as an Amtrak Engineer

TNT / Tools & Techniques
SNT / Show & Tell – open topic, any model
PNF / Pics & Flics
MODELER’S FORUM: 1) uncouplers 2) wheelsets

This is the last regular Division 1 meeting of the 2013-2014 business year. See you at Maumee Express 2014 April 25-27.



Union Depot 2006
By: Ray Huber

VIEW FROM THE CAB



Wow, where does the time go? It's hard to believe that we are wrapping up the 2013-2014 activity year for Division 1. Big thanks to all of you [who] provided leadership and programming. And BIG thanks to all our members who showed up, encouraged, shared, and provided content to our meetings. This year has seen a major expansion in the role members play in our programs. We now have Show-n-Tell, Tools-n-Techniques, and Pics-n-Flics at every meeting, providing various styles of forums for members to exchange their experience and expertise. At the upcoming March 28 meeting, we'll initiate still another format called Modeler's Forum. We'll discuss two different topics: uncouplers and wheelsets. Bring your questions, know-how, and suggestions. Then we'll pursue other popular modeling topics at future meetings.

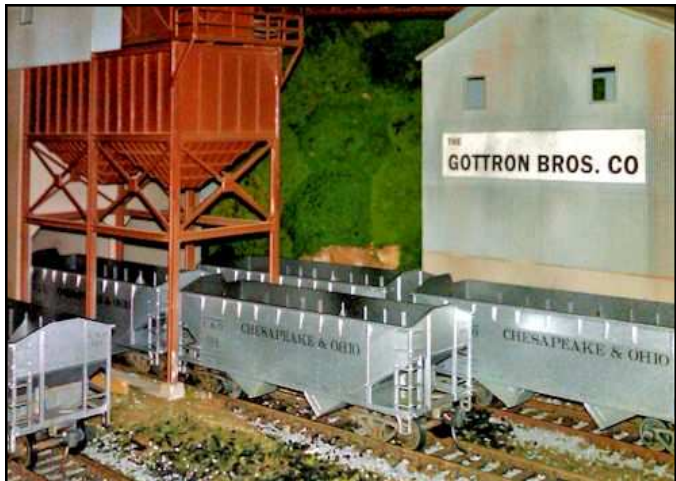
This will be our last monthly meeting until September. Next month, we will host the North Central Region's annual convention, Maumee Express 2014, April 25-27. If you have not already registered, please do so ASAP.

Sometime in May or June, we will have a group outing at Crossroads Village and the Huckleberry Railroad near Flint, MI. This promises to be a day full of adventure, discovery, and fellowship. Check out their website for more info, and we'll discuss details at the March 28 meeting. I look forward to seeing you then, and bring a friend along!

A stylized signature or scribble.

THE DETAIL PAGE

As I mentioned in the last Train Order, I still think Fred Lux's idea of showing us some detail shots of your work is a great idea. The trick with this type of pictures is controlling the depth of field. If you are using a point and shoot camera, this can be a challenge. However, many of these cameras allow you to get close, but as you do the picture begin to get fuzzy in front of and beyond the main point to interest. Check to see if you can adjust your "f" stops. If you can, use the biggest number possible. Also, it's better to move the camera in toward the scene rather than zoom into it. You can lose detail by zooming in.



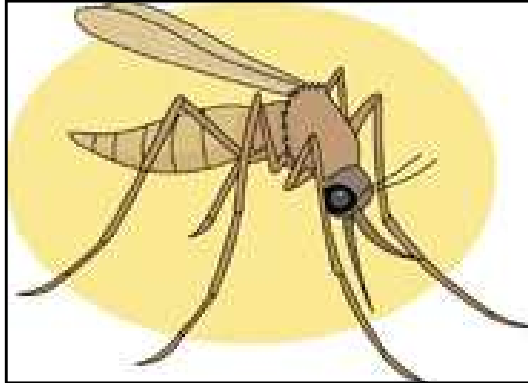
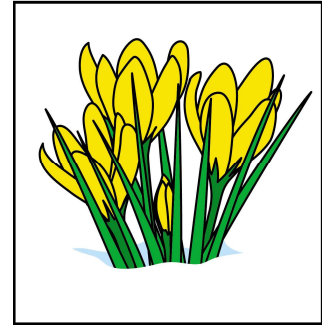
All you need to do is get close, hold steady and shoot. A tripod will help a lot!

Here's some detail by: Mike Anteau

From the Editor's Desk

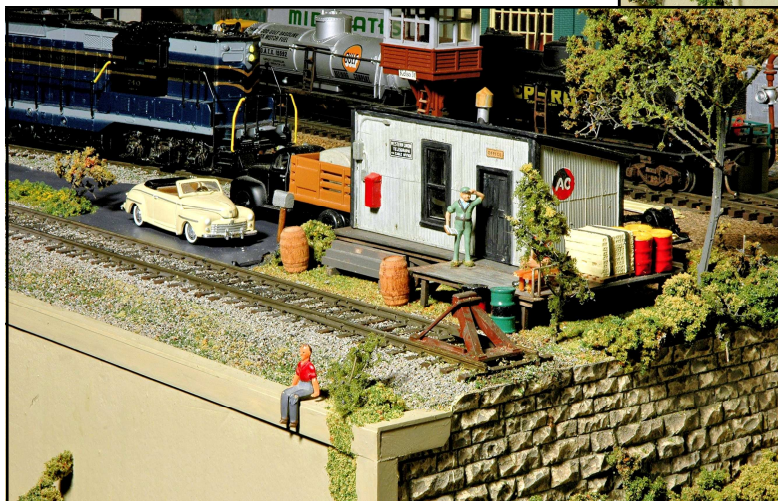
Ray Huber

Who knows, by the time you read this the snow may be gone, the temperature 72 degrees, buds on the trees and the grass and flowers starting to grow. All I know is that this time of year heralds in the "NO BUILD" time of year for me and my model railroad.



To be frank, I'd rather sit on my patio with my favorite libation in hand and watch the sun set in the west. Mind you now, the whole time I'm doing this I'm thinking—let's see now, what am I going to do the next time I get serious about working on the layout? By this time, it's around 9:00 pm, the shadows are getting long and a mosquito or two is starting to buzz around my ear. With that, I make a fast retreat for the house and call it a day. Hard to think of a mosquito when it's zero degree outside as I write this article.

Back to our hobby for a minute, I keep coming back to the idea of that detail on your layout that everyone needs to see. That comment alone begs a picture and that's what I've been talking about all season. Take it from me, you can do it.. Look at these two pictures, same building, two different angles. If only the rest of the layout were like this—long sigh! As they say, it's a work in progress.



Tech Details

- A. Very bright light (500 watt)
- B. Camera on a tripod
- C. Camera set for Incandescent light .
- D. Cable release
- E. Biggest "f" stop I had (f29)
- F. Focus mid picture
- G. A photo editor helped

MAUMEE EXPRESS 2014

MAY I HAVE YOUR ATTENTION!

If you haven't noticed, we have just begun the month of March and that means April is the next month on the calendar. What's the big deal with April? Hopefully, winter and the snow and ice will be gone, but more specifically it's time for our Regional Convention, the **MAUMEE EXPRESS 2014** which will be held on April 25, 26 & 27 right here in Toledo, Ohio.

If you have not seen the notice and details, please access our web site at;

<http://www.divisiononencr.com>

Regional Conventions are a lot of work, but at the end of the day, they are a lot of fun. We are planning just that and hope you will join us. To that end, you will find a registration/order form on the next page of the Train Order. Print the whole Train Order or just that page. Fill in the information and mail/email it to the address indicated.

There will be clinics, layout tours, operating sessions, discussion groups, model contest, photo contest and a chance to renew old friendships and start new ones. See the complete advertisement for all the details.

Remember this date!



April 25, 26, & 27.

**Maumee Express 2014
 NMRA NCR Regional Convention
 April 25 – 27, 2014**

General Information

Date:
 Name:
 Street Address:
 City:
 State: ZIP:
 Telephone:
 E-mail:

NMRA membership #

Expiration Date

Convention Registration

Circle the appropriate registration category and enter you total fee below

Single NMRA registration - \$45.00

Family (at least one NMRA member) - \$55.00

Total Registration Fees \$ _____

Name Badge Information

Primary Registrant

Registered Family Members

Convention Shirts (presale only)

S – XL @ \$20, 2XL @ 21, 3XL @ \$23, 4XL @ \$24

Polo Shirt w/ pocket – Men’s
 S__ M__ L__ XL__ XX__ XXX__

Polo Shirt w/ pocket – Women’s
 S__ M__ L__ XL__ XX__ XXX__

Short sleeve Denim
 S__ M__ L__ XL__ XX__ XXX__

Long sleeve Denim
 S__ M__ L__ XL__ XX__ XXX__

Total for Shirts \$ _____

Convention Coffee Mugs @ \$6 each

Mugs _____ Total \$ _____

Total Amount enclosed with Registration

Total Enclosed \$ _____

Payment may be made by check or money order made out to:

Division One NCR

_____ Send Ops Session Information

_____ I would be interested in participating in a switching contest, should one be available.

Mail to: Maumee Express 2014, Jerry Sahagian, 2025 The Bluffs, Toledo, OH 43615

Registration forms must be postmarked no later than April 14, 2014

MAUMEE EXPRESS CONVENTION 2014 UPDATE

Maumee Express 2014
Convention Update
Fred Lux, Convention Chair

Everything seems to be falling into place for the convention next month. Jerry reports that registrations are coming in. Dave and his committee have a full slate of clinics and a clinic grid has been sent to Paul to put on the convention web site. Jim Treadaway and his committee have lined up 18 layouts to be open at one time or another during the weekend. They have also gotten commitments from 5 layout owners to host operating sessions. Four of those sessions will be Friday evening and one will be Saturday during the day. In addition, the Operation Road Show group in Saline is hosting an ops session on Sunday afternoon. Jeff Schumaker and his committee have lined up a nice selection of modular layouts to be on display during the convention. These modular layouts range from small time-saver switching layouts to the massive Free-Mo layout that will fill an entire ballroom. Steve Kellogg has contacted lots of vendors in the model railroad world and is receiving donations for door prizes for the convention.

Sounds like everything is under control, you say. Well, at first glance it is. What we need now are volunteers from Division to work at convention. We need 3 room hosts / hostesses on Friday afternoon, 3 more on Saturday morning, and finally 3 more on Saturday afternoon. The room hosts will be responsible for introducing the clinic speakers, and making sure clinics start on time. Along with this goes making sure clinics end on time. Hosts will assist the speakers in setting up, if necessary, and will make contact with our onsite tech committee should technical help be needed. As a bonus, the hosts get to see the clinics they are hosting.

A team from NCR will be doing the judging for contests. They may need help Friday afternoon and Saturday morning checking entries in, and facilitating entry pick up Saturday afternoon after judging is over. We need a couple of volunteers here also.

The convention "store" will be busy Friday and Saturday. This is where convention attendees will pick up the merchandise they ordered. This is also where the door prizes will be displayed and handed out. There may be some extra merchandise, namely coffee mugs that are for sale over the counter. Several volunteers will be needed here over the weekend.

The convention registration desk in the hotel lobby will be open Thursday evening, most of the day on Friday, and Saturday morning. Preregistered attendees will be picking up their convention material here. Also onsite registration will be handled here.

On Tuesday or Wednesday evening of convention week, volunteers will be needed to help pack convention bags and registration envelopes. We will be meeting in one of the vacant meeting rooms at the hotel to do this task. The convention committee may even spring for pizza for the packing crew.

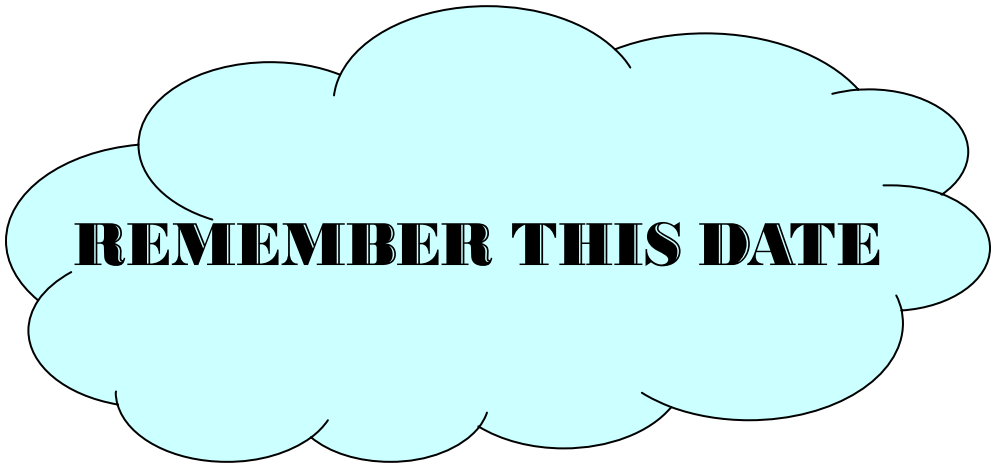
Cont. On Page 9



Things are coming together nicely, as I said. Now all we need is your help to make this convention a success. Volunteer sheets will be at Division meeting this month. If you are not going to make the division meeting, you can always contact Scott Davidson or me to get your name on the volunteer list. Also, don't forget to register for the convention yourself. Even the convention chair has to register. (I was registration #2.) See you in March at the Division meeting, and then in April at the convention.



April 25, 26, & 27.



HEADS UP EVERYBODY.

ANOTHER TRAIN EVENT TO PUT ON YOUR CALENDAR DURING THE REGIONAL CONVENTION THIS COMING APRIL. IT WILL BE INTERESTING TO SEE WHAT THE BLISSFIELD CLUB HAS DONE WITH THEIR NEW LAYOUT AND LOCATION. SEE YA THERE!

**TWO DAYS
OF
RAILROAD FUN!**

BLISSFIELD



**BRING
THE
FAMILY!**

RAILROAD DAYS

April 26-27, 2014

Blissfield, Michigan

20 mi NW of Toledo, OH
on US 223

HOURS
10 am to 4 pm

Railroad Days Ticket
covers all venues
except train rides
\$3 (kids under 5 FREE)

Ride the Adrian & Blissfield RR

TRAIN RIDE

Sat. 10-2, Sun. 10-4 \$5 per seat

Tickets sold only at the Dinner Train Depot

TWO-DAY

TRAIN SHOW

BUY-SELL-SWAP (100+ tables)
10-4 both days

**HO & G SCALE
MODULAR RAILROADS**

**FREE
S
H
U
T
T
L
E
B
U
S**

FULL-SCALE DISPLAYS

CLIMB ABOARD!

**Diesel Locomotive
Cabooses**

**BLISSFIELD'S FAMOUS
MODEL RAILROADS**

- **Doug Tagsold's**
HO scale Terminal of Toledo Railroad
- **Blissfield Model Railroad Club**
See our new facility & plans
- **Clem Krzeczkowski's**
3-Rail O scale railroad
- **Frank Baker's**
S scale "fun for kids" railroads
- **Raisin River Valley Model Railroad**
HO scale - Blissfield's newest

Additional Attraction

**Old Road
Dinner Train**

Loading at 6 p.m. Saturday
Reservations Required - Call 888-467-2451

**FOOD
DOWNTOWN
STORE
TRAIN DISPLAYS**

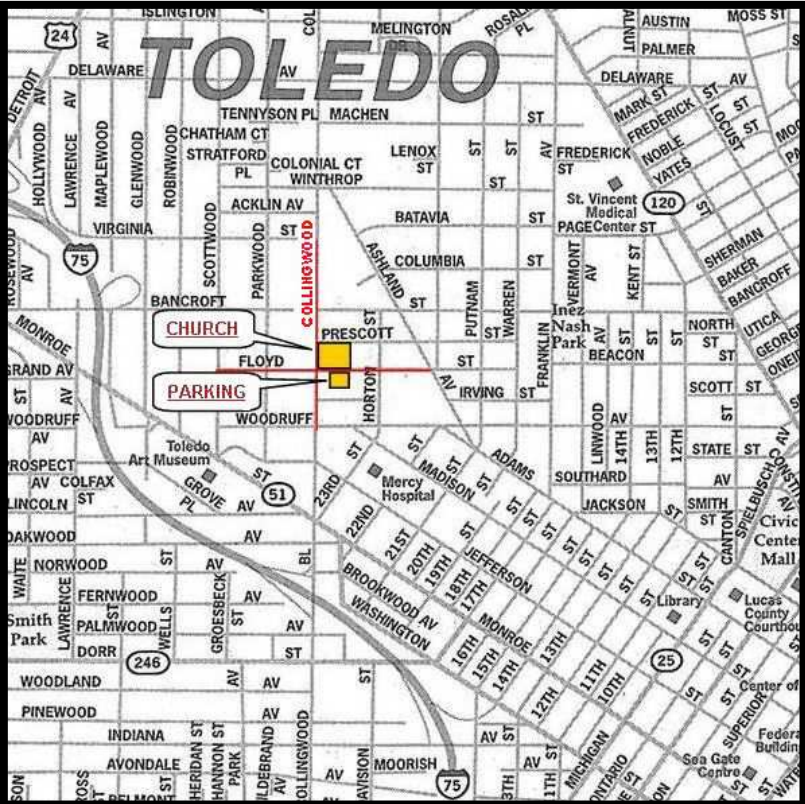


-- INFO IN THE HISTORIC DEPOT

**DRINKS
ICE CREAM
ANTIQUES**

LANE ST. MINI-PARK GARDEN RAILWAY

We meet at the Collingwood Presbyterian Church located at 2108 Collingwood Blvd. at Floyd St. near downtown Toledo, Ohio. See the location map shown below. The doors open at **7:00 PM** and the meeting starts at **7:30 PM**.



CURRENT OFFICERS 2013 - 2014

- Superintendent -Dave McMullian.....davemcmullian@earthlink.net
- Assistant Superintendent -Jim Lang.....jiang@buckeye-express.com
- Chief Clerk -John Roth.....jroth@bex.net
- Agent -Phil Kauffmanpennsy6401@bex.net
- Trainmaster for Services -Steve Kelloggatsfmktrock@yahoo.com
- Director at Larger -Scott Davidson.....s.i.davidson@hotmail.com
- Train Order Editor -Ray Huber.....rahuber@bex.net
- Librarian - Vacant

Division One is a 100% NMRA membership organization. For insurance purposes, you are required to be a member of NMRA. Membership in NMRA grants you membership in the North Central Region and Division One.